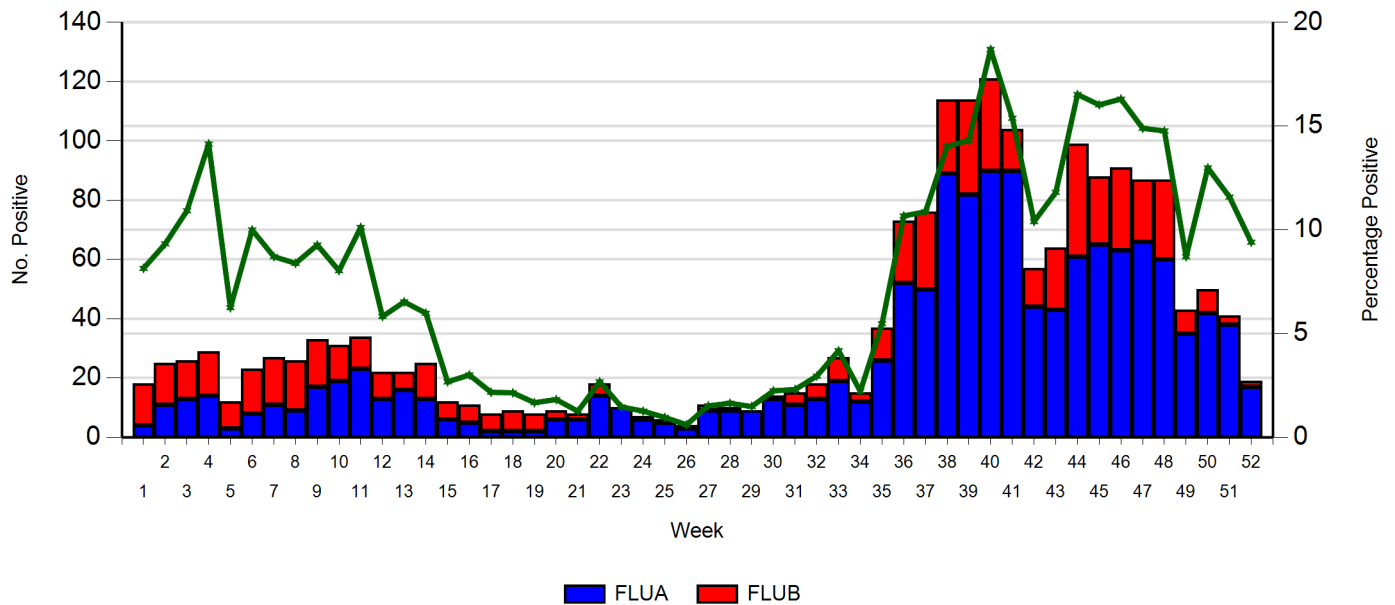


# Respiratory Virus Report 2018

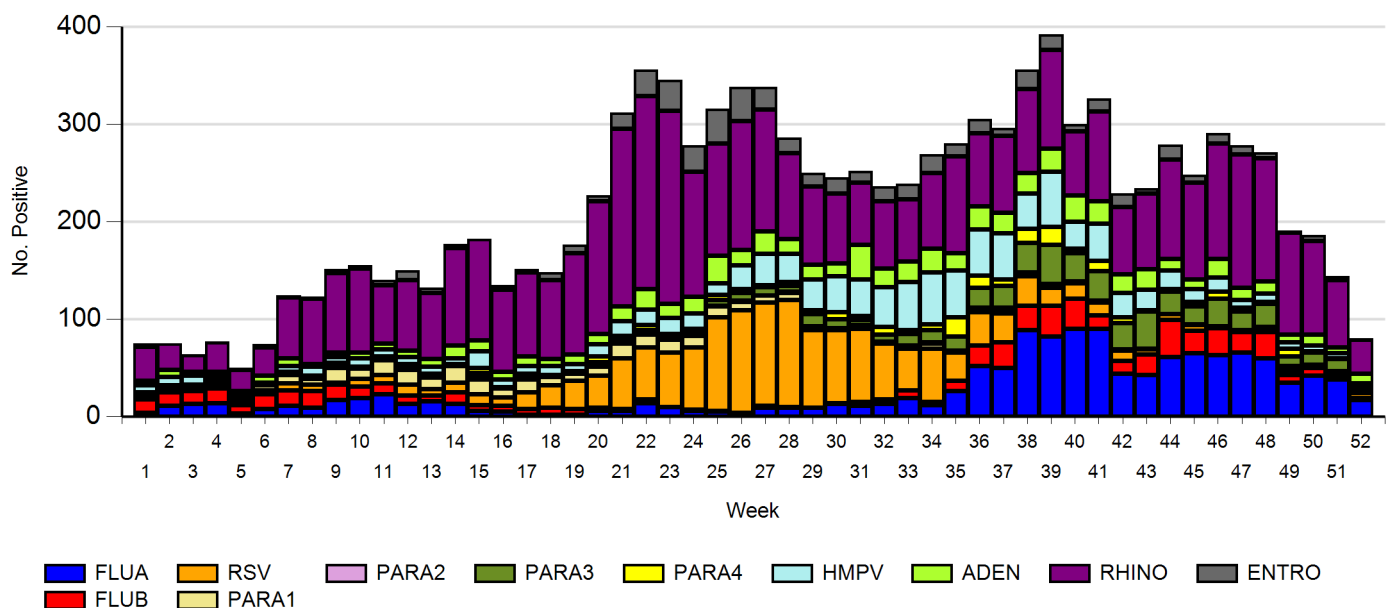
**Figure 1. Positive Influenza Viruses by Week for 2018**



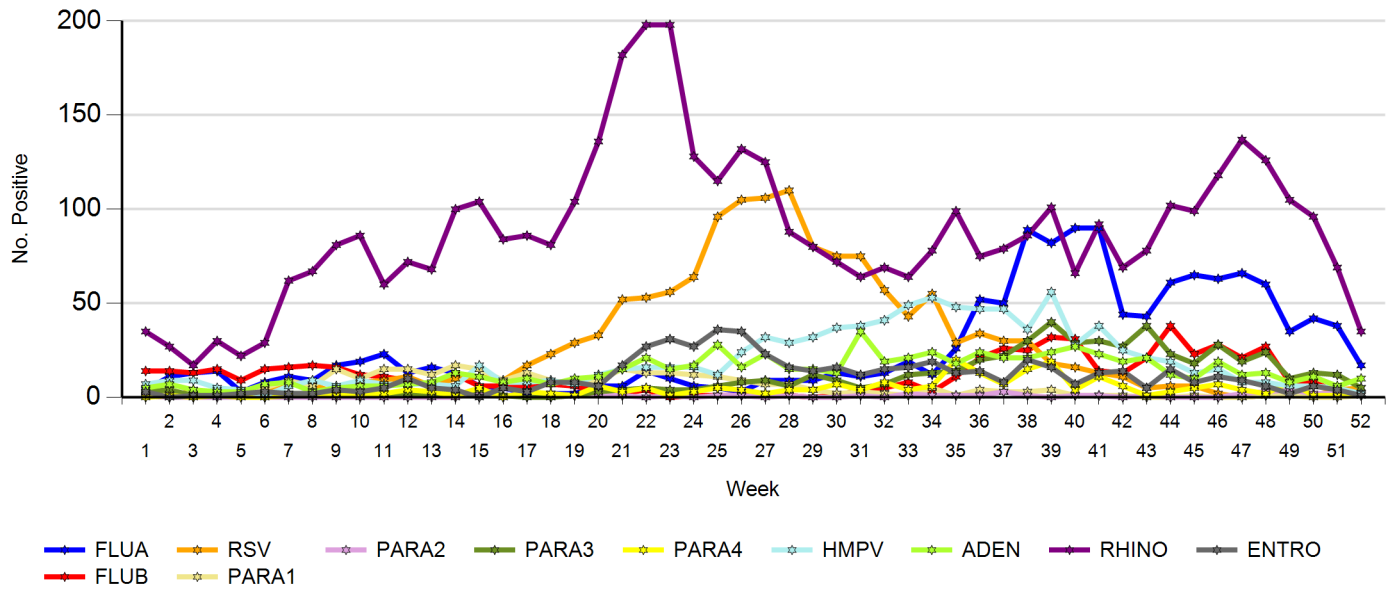
**Table 1. Influenza Viruses by week for 2018**

Week No.	1	2	3	4	5	6	7	8	9	10	11	12	13	14	15	16	17	18	19	20	21	22	23	24	25	26	27	28	29	30	31	32	33	34	35	36	37	38	39	40	41	42	43	44	45	46	47	48	49	50	51	52	Total
FLUA	4	11	13	14	3	8	11	9	17	19	23	13	16	13	6	5	2	2	2	6	6	14	10	6	5	3	9	9	9	13	11	13	19	12	26	52	50	89	82	90	90	44	43	61	65	63	66	60	35	42	38	17	1349
FLUB	14	14	13	15	9	15	16	17	16	12	11	9	6	12	6	6	6	7	6	3	2	4		1	1	1	2	1		1	4	5	8	3	11	21	26	25	32	31	14	13	21	38	23	28	21	27	8	8	3	2	598
%Pos	8	9	11	14	6	10	9	8	9	8	10	6	7	6	3	3	2	2	2	2	1	3	1	1	1	1	2	2	1	2	2	3	4	2	5	11	11	14	14	19	15	10	12	17	16	16	15	15	9	13	12	9	
Total	18	25	26	29	12	23	27	26	33	31	34	22	22	25	12	11	8	9	8	9	8	18	10	7	6	4	11	10	9	14	15	18	27	15	37	73	76	114	114	121	104	57	64	99	88	91	87	87	43	50	41	19	1947

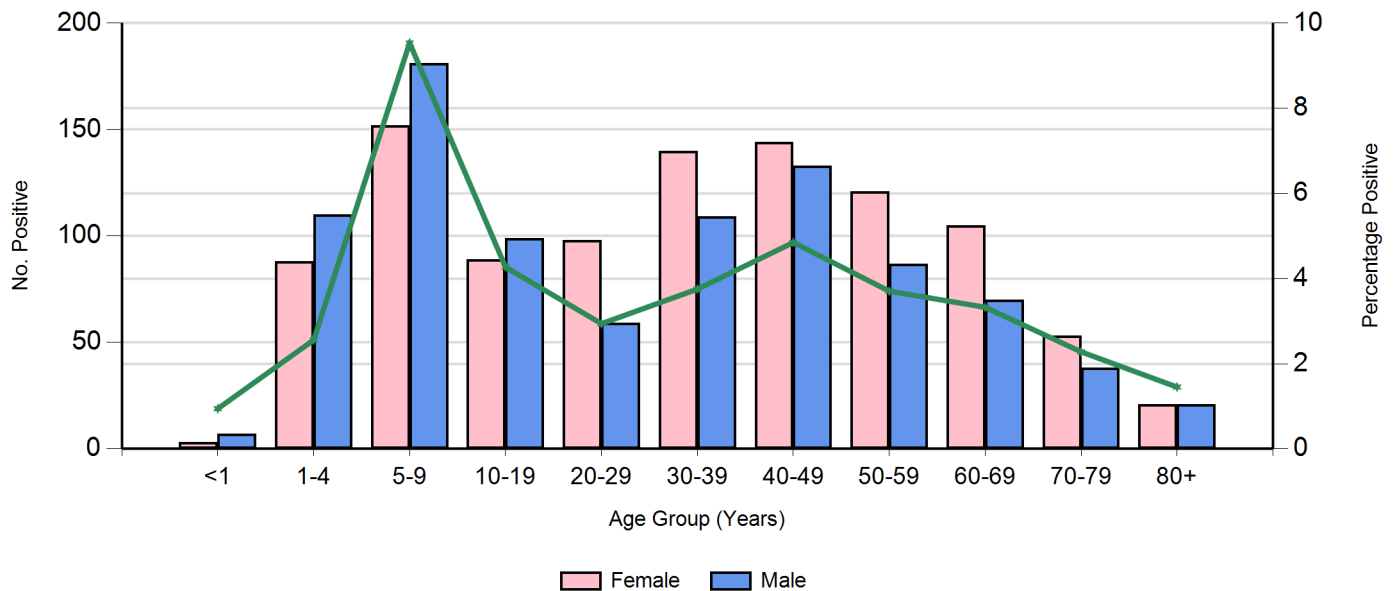
**Figure 2a. All Positive Respiratory Viruses by Week for 2018 (Stacked Graph)**



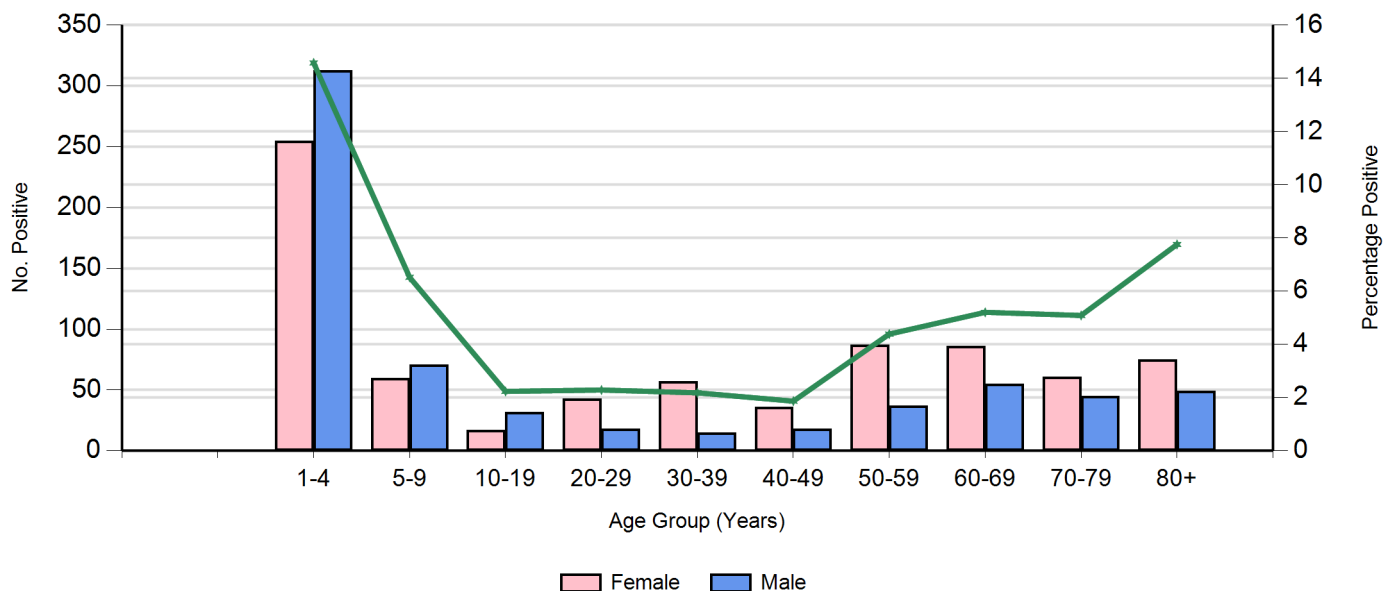
**Figure 2b. All Respiratory Viruses by Week for 2018 (Line Graph)**



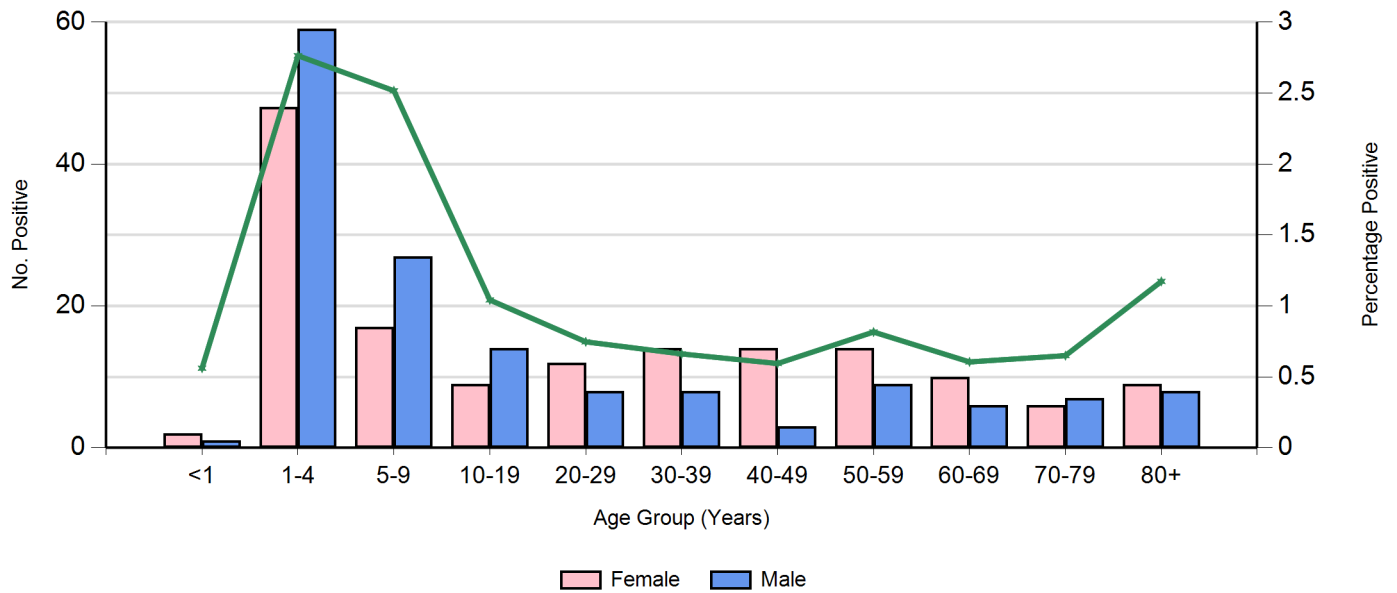
**Figure 3. Positive Influenza viruses by Age Group for 2018**



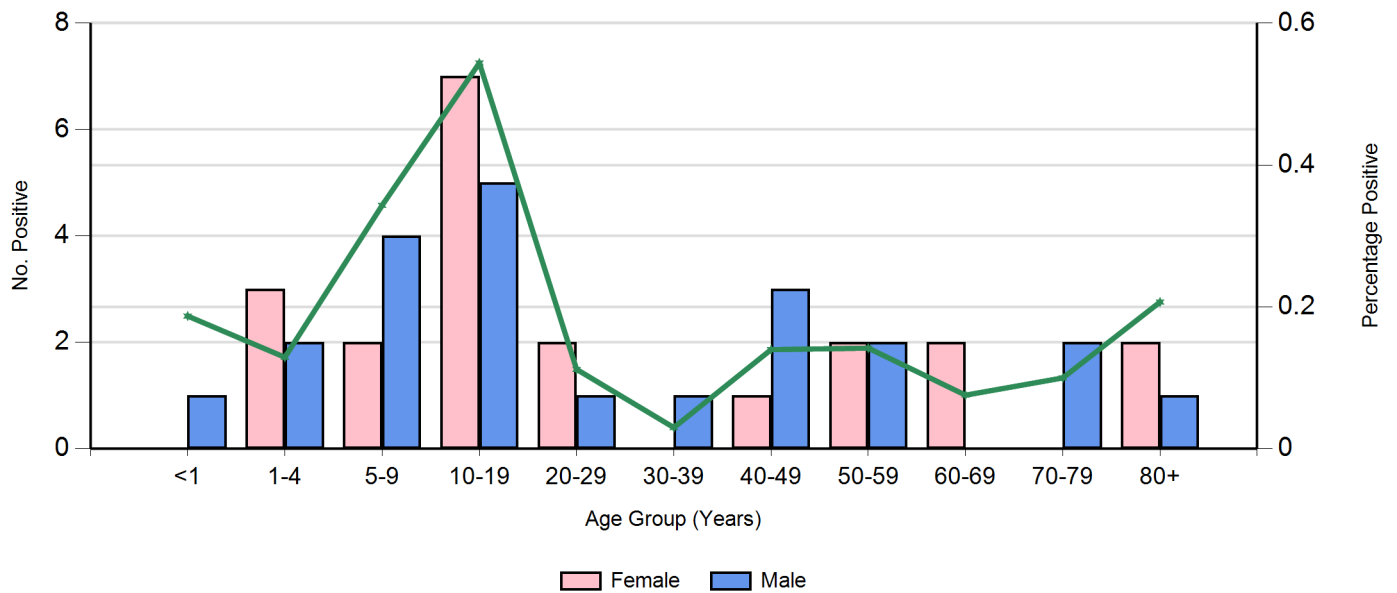
**Figure 4. Positive RSV by Age Group for 2018**



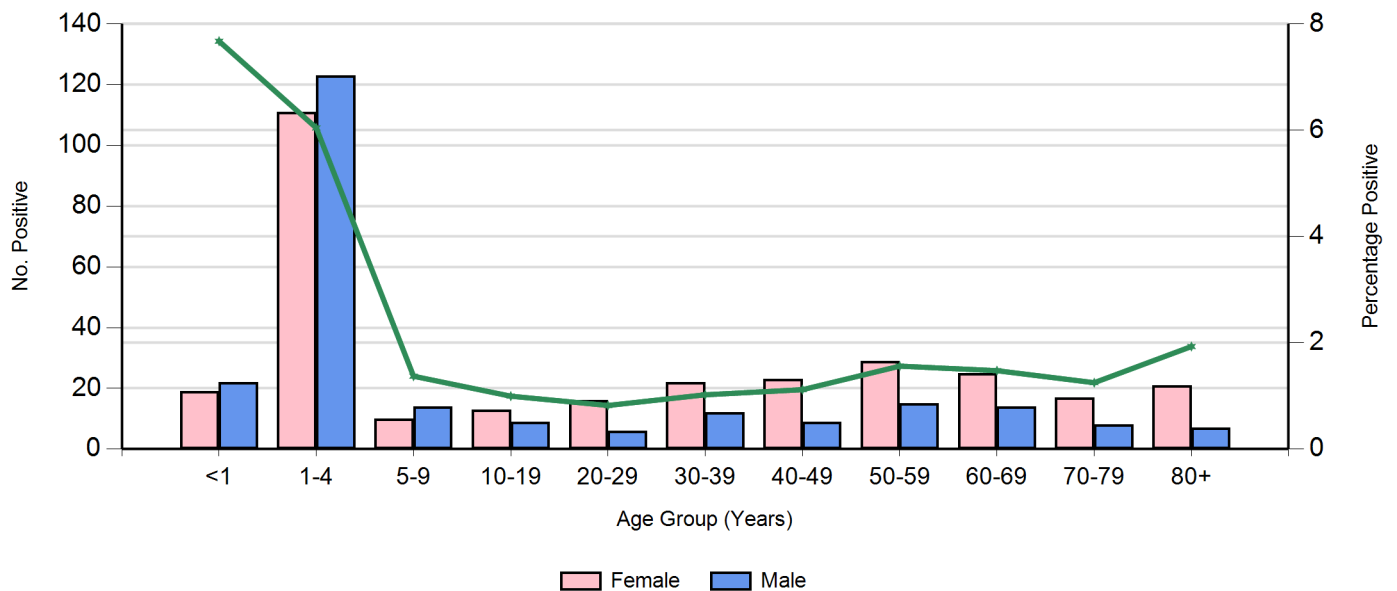
**Figure 5. Positive Parainfluenza 1 by Age Group for 2018**



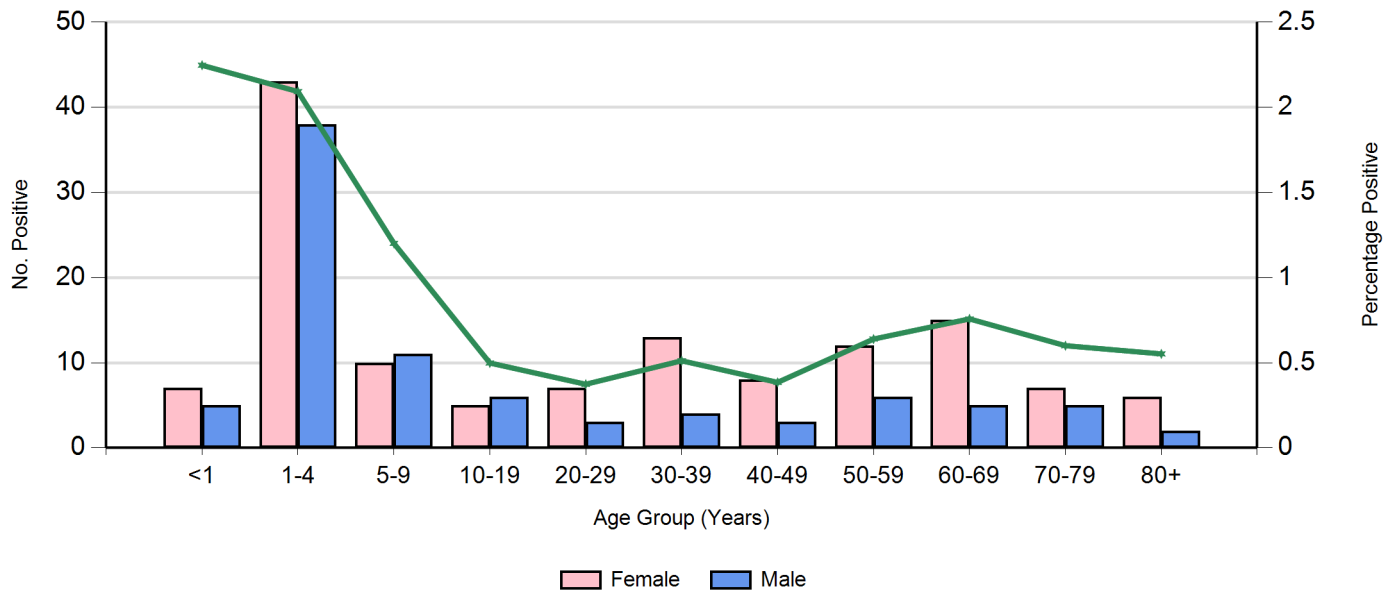
**Figure 6. Positive Parainfluenza 2 by Age Group for 2018**



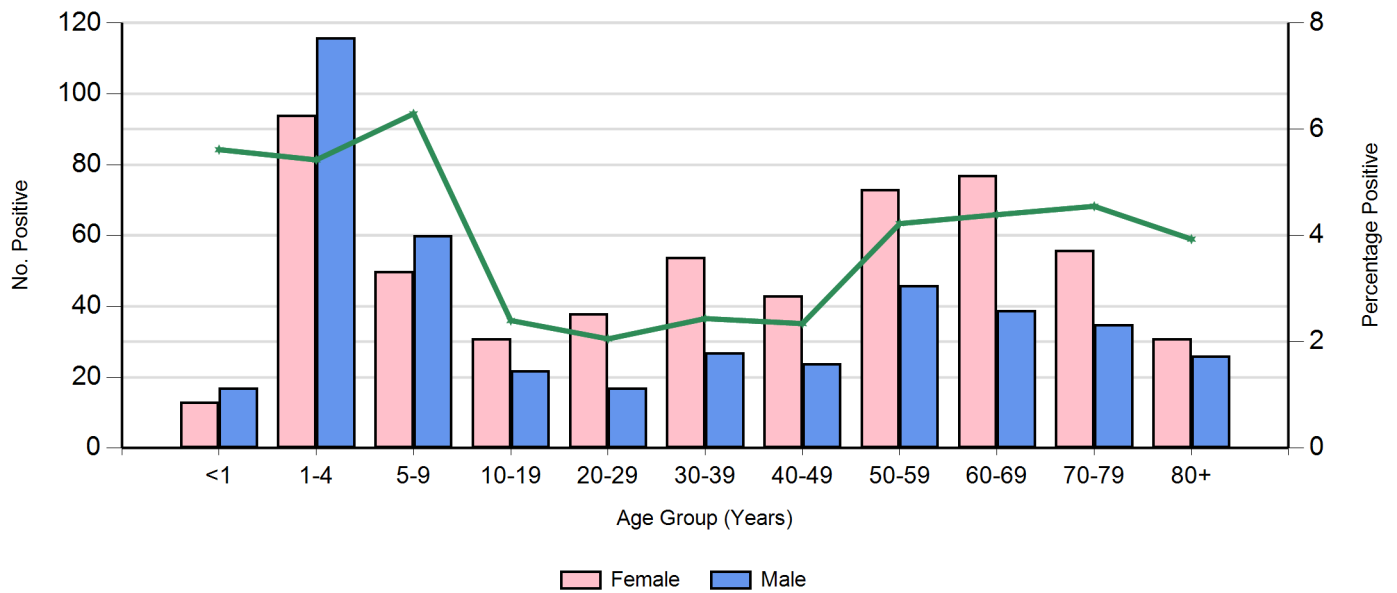
**Figure 7. Positive Parainfluenza 3 by Age Group for 2018**



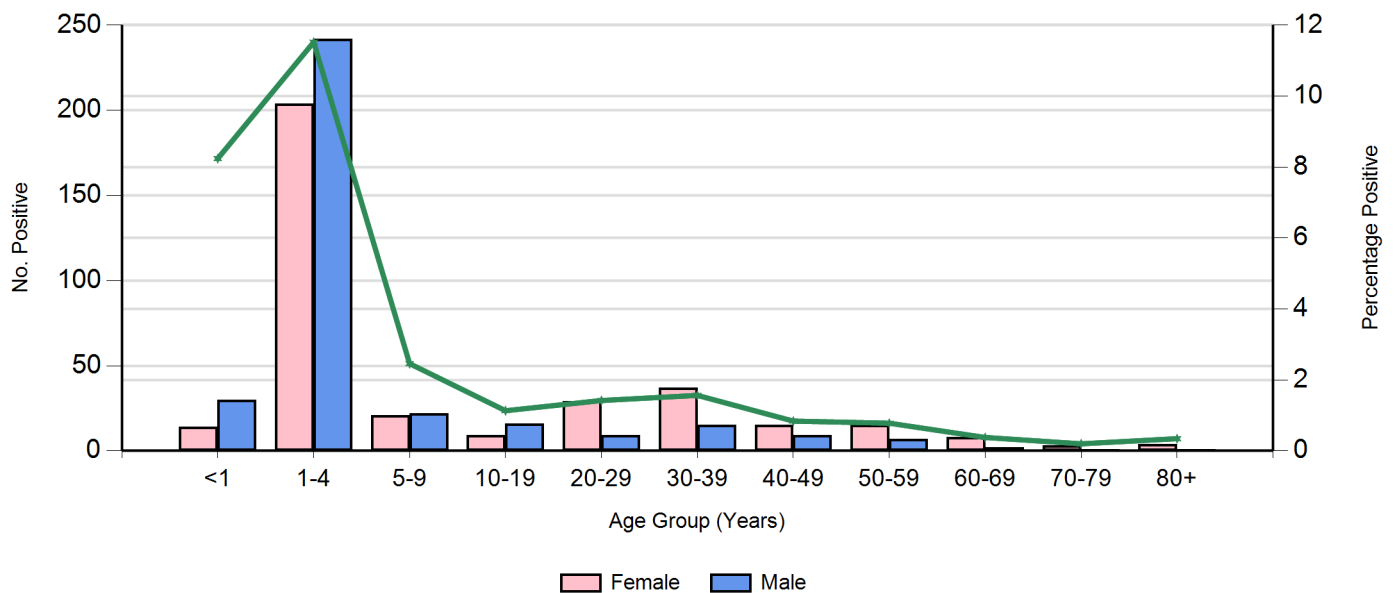
**Figure 8. Positive Parainfluenza 4 by Age Group for 2018**



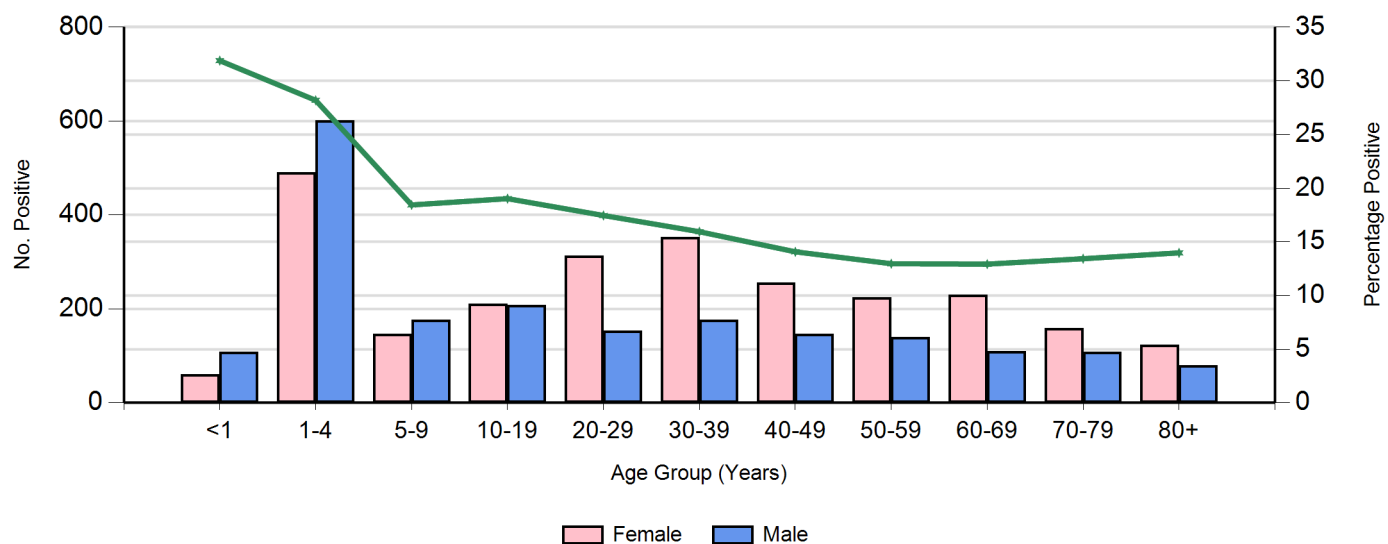
**Figure 9. Positive Human Metapneumovirus by Age Group for 2018**



**Figure 10. Positive Adenovirus by Age Group for 2018**



**Figure 11. Positive Rhinovirus by Age Group for 2018**



\*Rhinovirus testing commenced 17/09/2016

**Table 2. Regions**

Metropolitan	Southern	Eastern	Northern	Rural	Western
Adelaide Hills	South East	Murray region	Far North	North	Eyre Peninsula
Eastern Suburbs	Kangaroo Island	East	Barossa region	North East	Yorke Peninsula
Southern Suburbs	Fleurieu	Riverland		Far West/North West	
Western Suburbs					
Central					
Northern suburbs					

**Figure 12. Influenza Viruses by Week and Region for 2018**

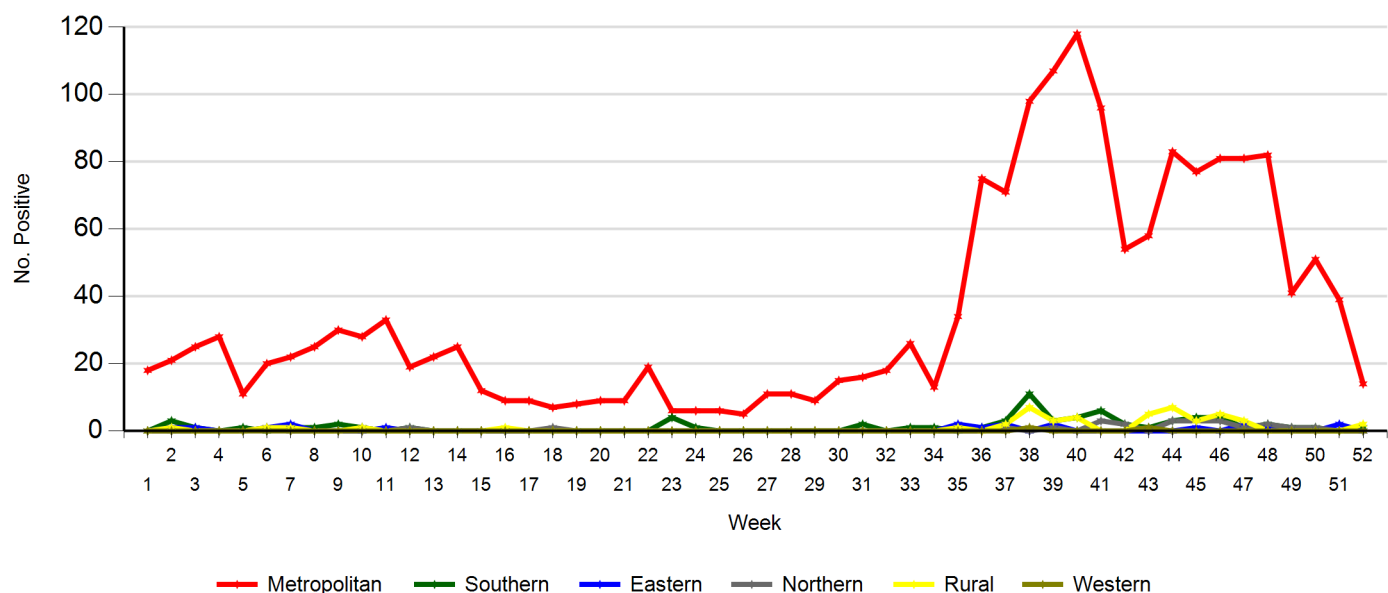


Figure 13. Positive RSV by Week and Region for 2018

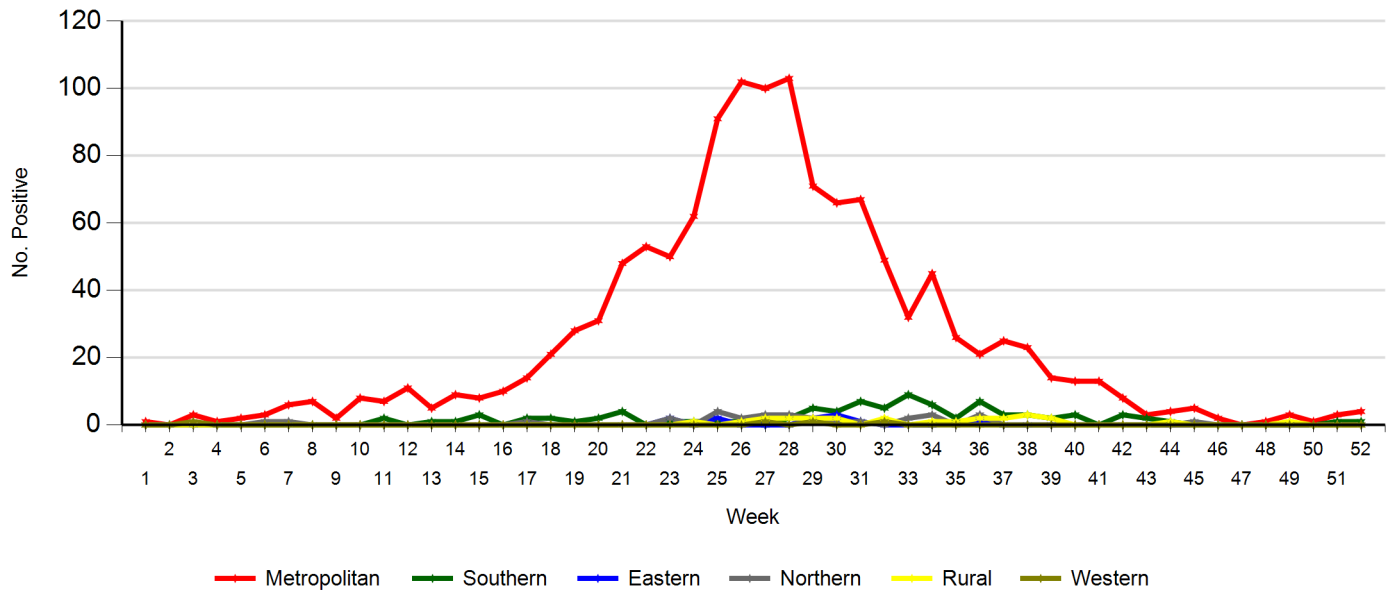


Figure 14. Positive Parainfluenza 1 by Week and Region for 2018

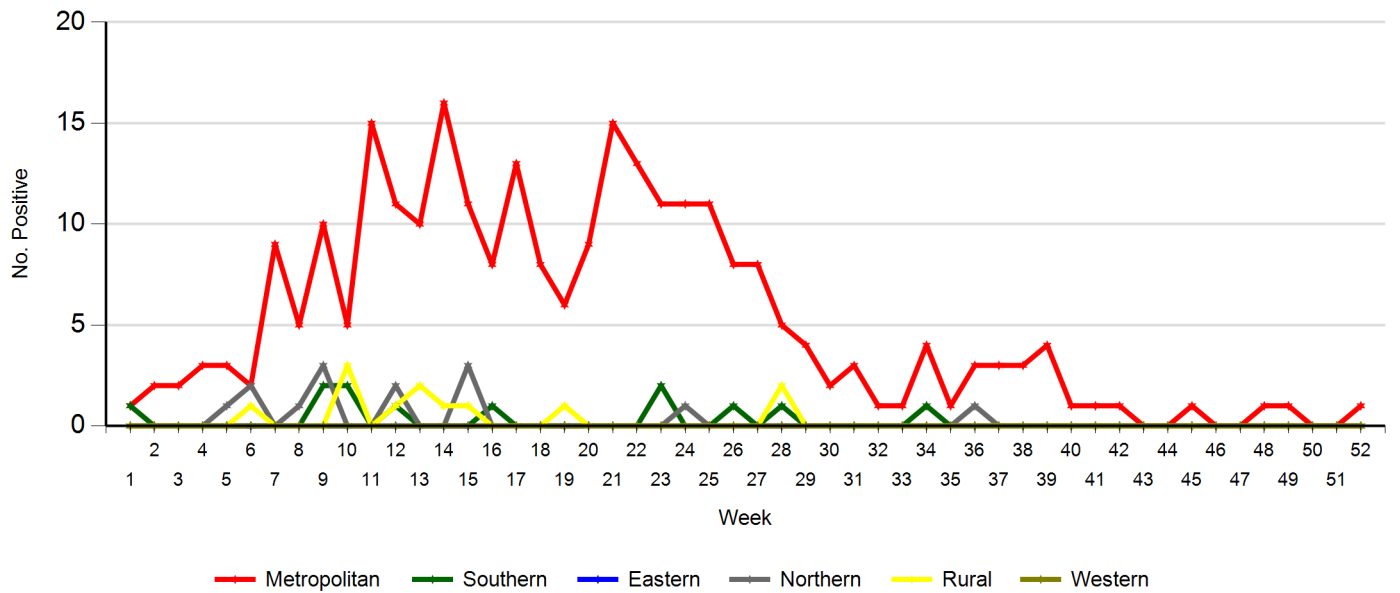
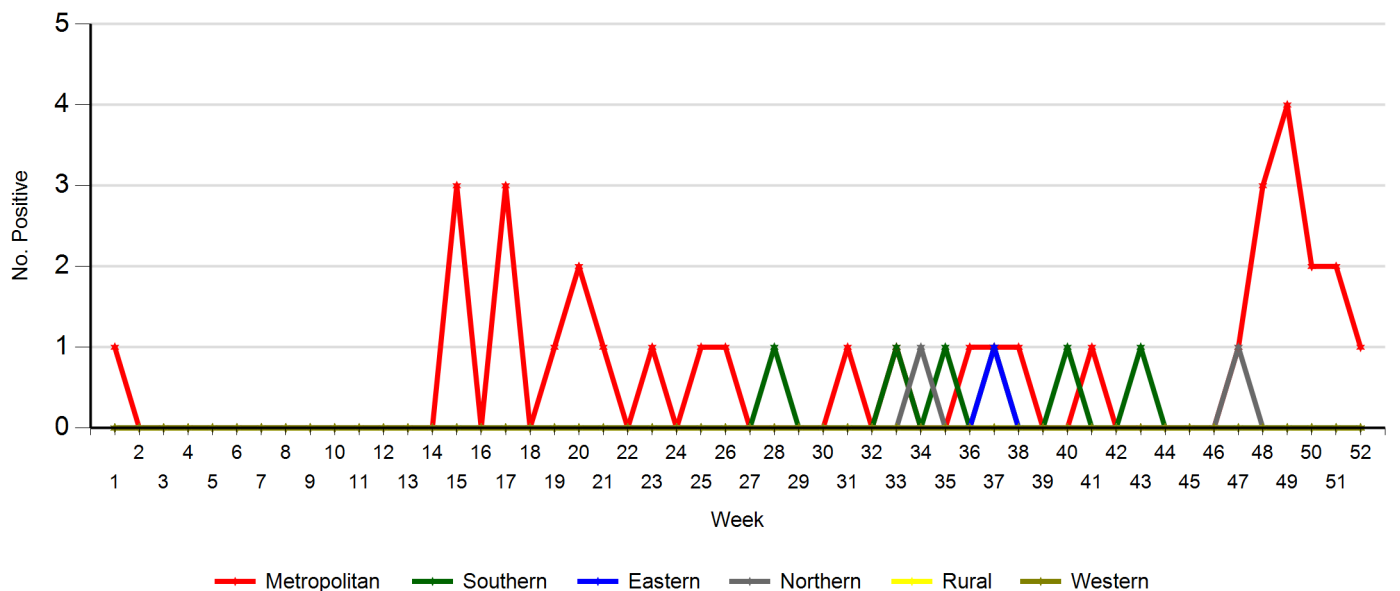
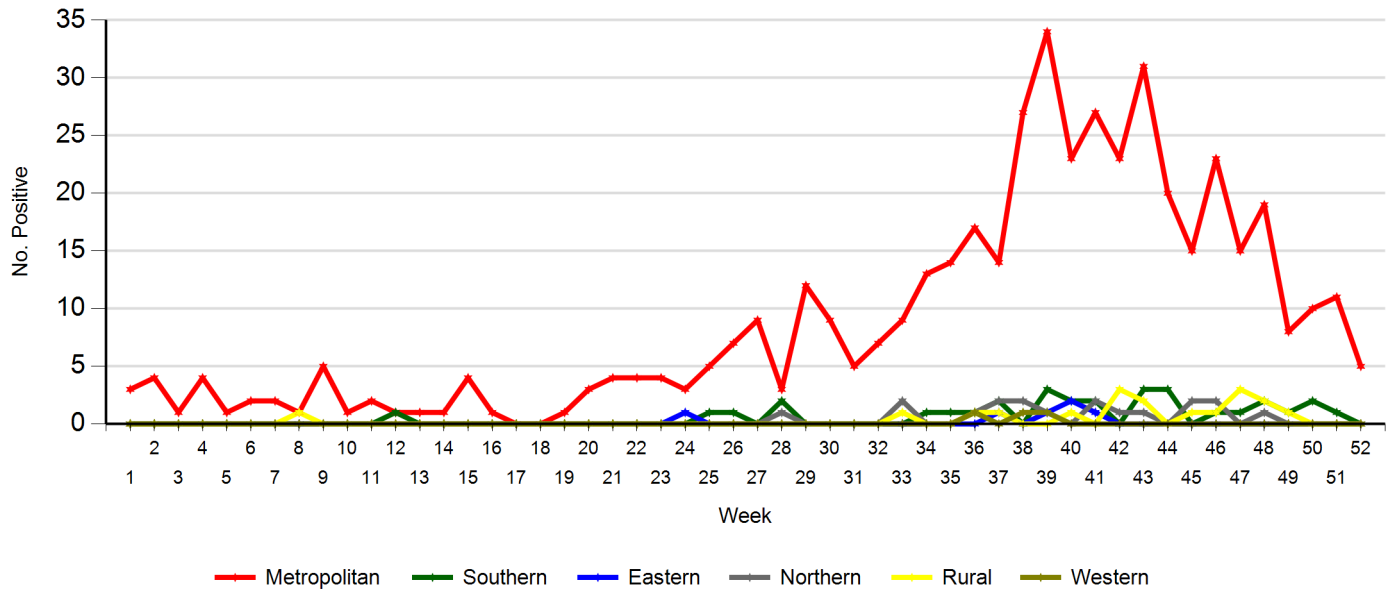


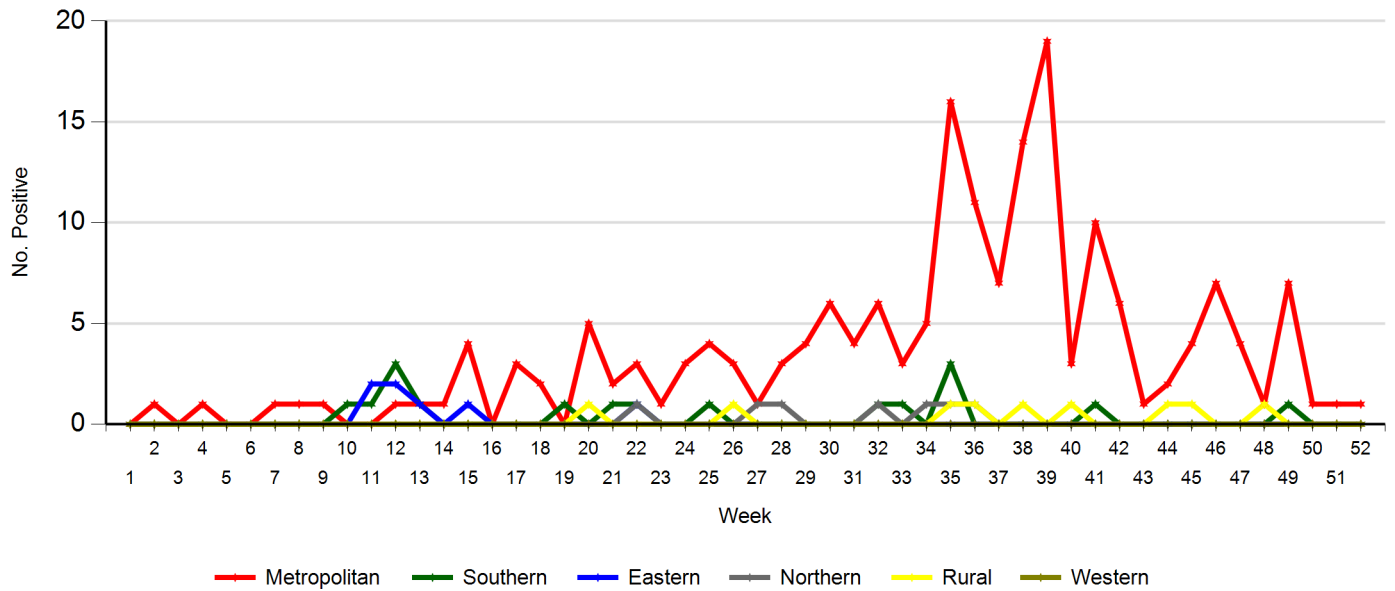
Figure 15. Positive Parainfluenza 2 by Week and Region for 2018



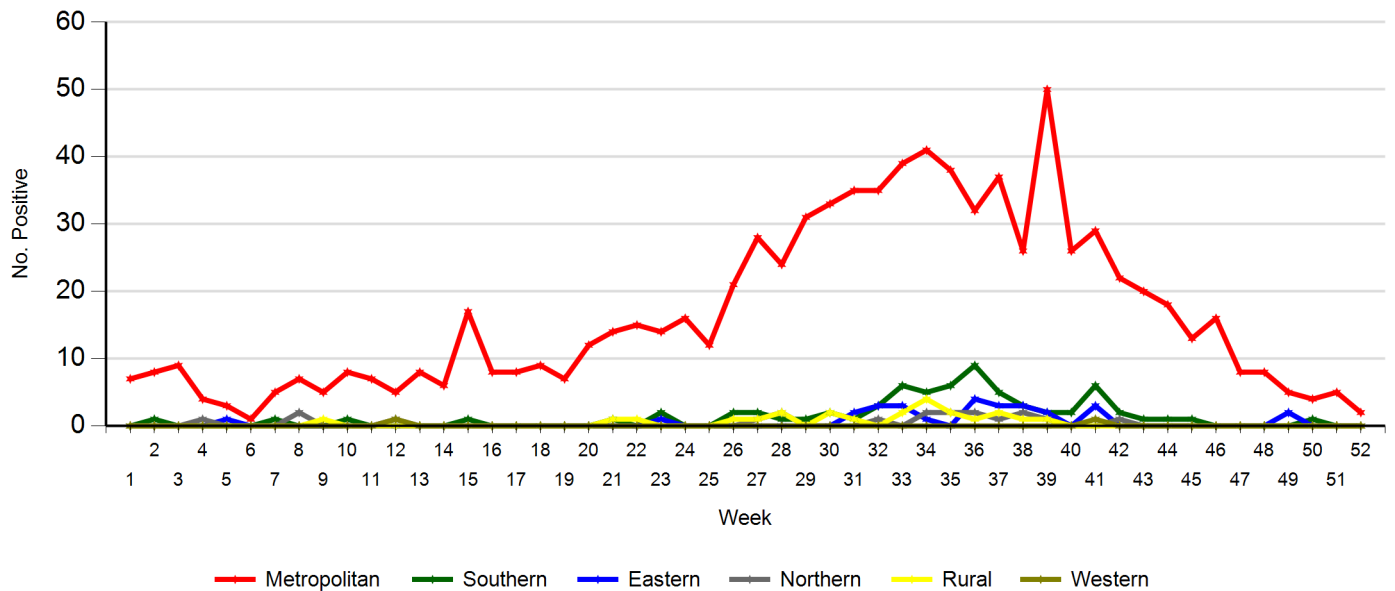
**Figure 16. Positive Parainfluenza 3 by Week and Region for 2018**



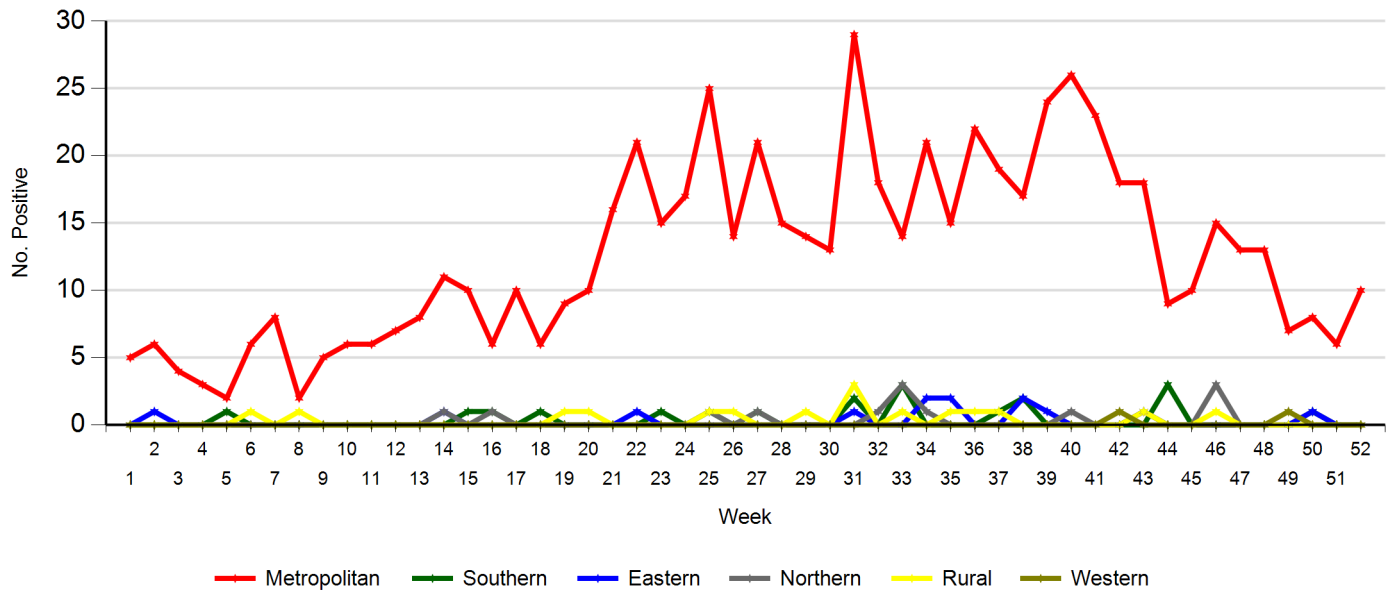
**Figure 17. Positive Parainfluenza 4 by Week and Region for 2018**



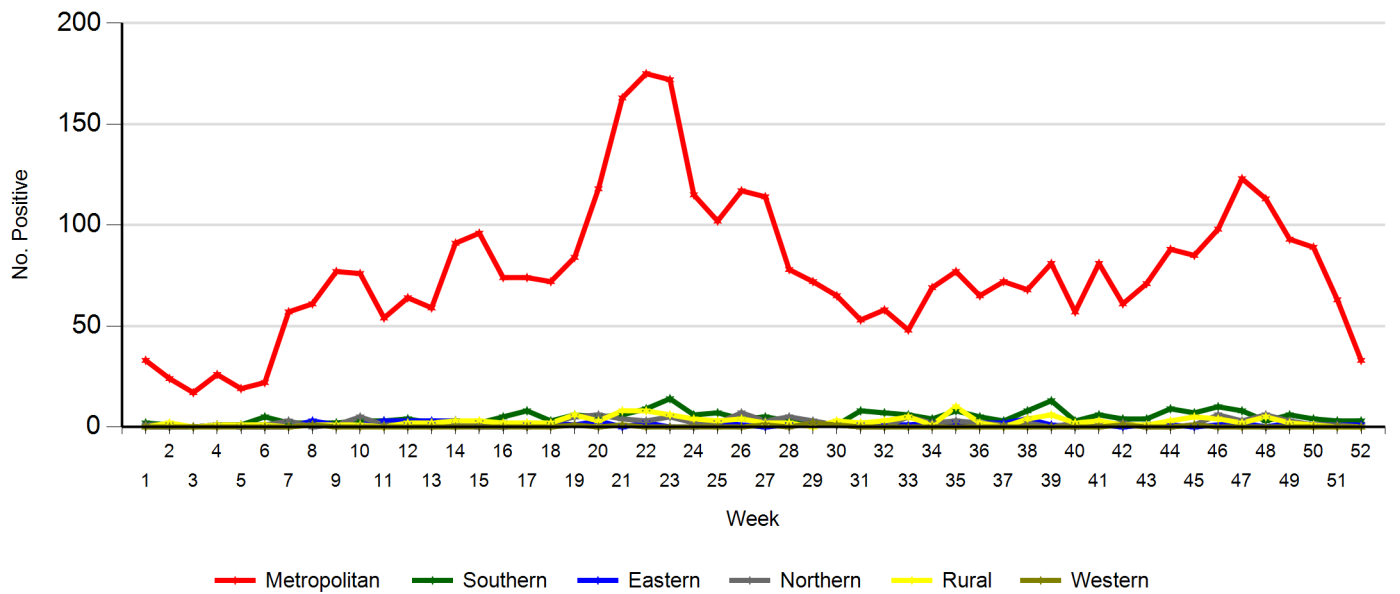
**Figure 18. Positive Human Metapneumovirus by Week and Region for 2018**



**Figure 19. Positive Adenovirus by Week and Region for 2018**



**Figure 20. Positive Rhinovirus by Week and Region for 2018**





## Cumulative Respiratory Virus Reports: Table of contents

Figure1: Weekly influenza notifications by type and percentage of positive tests by week of testing. Referred testing from all jurisdictions is included.

Table 1: Weekly notifications of influenza viruses by type (influenza A, influenza B) and week.

Figure 2a: Weekly notifications of all respiratory viruses by type (influenza A, influenza B, RSV, Parainfluenza 1234, HMPV) - stacked. Referred testing from all jurisdictions is included.

Figure 2b: Weekly notifications of all respiratory viruses by type (influenza A, influenza B, RSV, Parainfluenza 1234, HMPV) - line graph. Referred testing from all jurisdictions is included.

Figure 3: YTD Weekly notifications of influenza (FLUA&B) by age group and gender.

Figure 4: YTD Weekly notifications Respiratory Syncytial Virus (RSV) by age group and gender.

Figure 5: YTD Weekly notifications Parainfluenza 1 virus (PARA1) by age group and gender.

Figure 6: YTD Weekly notifications Parainfluenza 2 virus (PARA2) by age group and gender.

Figure 7: YTD Weekly notifications Parainfluenza 3 virus (PARA3) by age group and gender.

Figure 8: YTD Weekly notifications Parainfluenza 4 virus (PARA4) by age group and gender.

Figure 9: YTD Weekly notifications Human Metapneumovirus (HMPV) by age group and gender.

Figure 10: YTD Weekly notifications Adenovirus virus (ADEN) by age group and gender.

Figure 11: YTD Weekly notifications Rhinovirus virus (RHINO) by age group and gender.

Table 2: Regions table South Australia.

Figure 12: Influenza notifications by week of testing and region.

Figure 13: Respiratory Syncytial Virus (RSV) notifications by week of testing and region.

Figure 14: Parainfluenza 1 virus (PARA1) by week of testing and region.

Figure 15: Parainfluenza 2 virus (PARA2) by week of testing and region.

Figure 16: Parainfluenza 3 virus (PARA3) by week of testing and region.

Figure 17: Parainfluenza 4 virus (PARA4) by week of testing and region.

Figure 18: Human Metapneumovirus (HMPV) by week of testing and region.

Figure 19: Adenovirus virus (ADEN) by week of testing and region.

Figure 20: Rhinovirus virus (RHINO) by week of testing and region.